

Injury attendances to Rochdale Infirmary Urgent Care Centre

January to December 2011

This report summarises recorded injury attendances to Rochdale Infirmary Urgent Care Centre (UCC) between January 2011 and December 2011.

Between January and December 2011, there were 21,864 injury attendances to Rochdale Infirmary UCC. Males accounted for over half (54%) of all attendances. The month with the highest attendances was March (n=2,412) with December (n=1,415) having the lowest attendances (**Figure 1**). The majority (65%) of attendances were recorded as other injury; of the specified injury groups falls accounted for the highest proportion (19%) followed by road traffic collision (RTC) (7%) and assault (4%) (**Table 1**).

For all attendances the highest proportion were for persons aged 5 to 19 (28%) and 20 to 34 (23%) years (**Figure 2**). Almost a quarter (23%) of fall attendees were aged 65 or over. Over two-fifths (43%) of RTC attendees were aged 20 to 34 years (**Figure 3**).

Table 2 shows the location where injuries occurred. Over two-fifths (43%) of injuries occurred in the home; 13% of injuries occurred in a public place. Two-fifths (40%) of falls occurred in the home whilst almost two-thirds (64%) of deliberate self harm (DSH) injuries occurred in the home.

Table 3 shows the ethnicity of attendees to Rochdale Infirmary ED. Almost three-quarters (74%) were white and 18% were Pakistani.

The disposal of a patient can give an indication of the severity of the injuries sustained. Nearly two-thirds (64%) of attendees were discharged, whilst over three in ten (31%) were referred and 4% were admitted (**Table 4**). Over three-quarters (77%) of RTC attendees were discharged (**Table 5**).

Table 6 shows the arrival methods of attendances at Rochdale Infirmary UCC. Almost three-quarters (73%) arrived by private transport whilst 8% arrived by taxi, 5% on foot and 4% by ambulance.

Table 7 presents data on assault attendances at Rochdale Infirmary UCC. Seven in ten (70%) were male whilst almost four in ten (39%) were aged 20 to 34 years. Nearly half (47%) occurred in a public place.

Figure 1: Rochdale Infirmary UCC: Total injury attendances by gender and month, January to December 2011

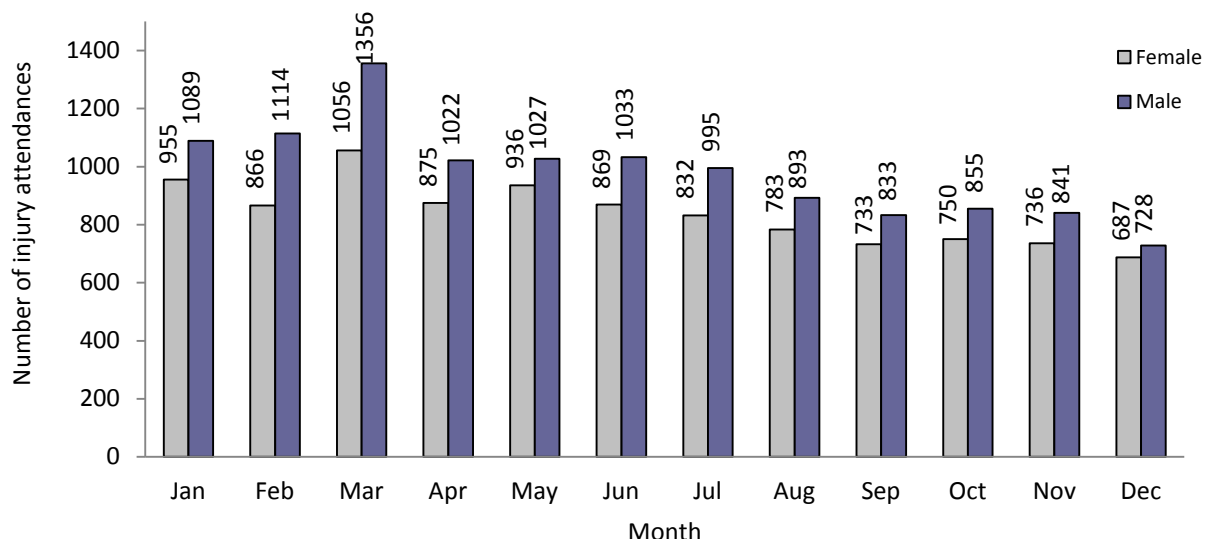
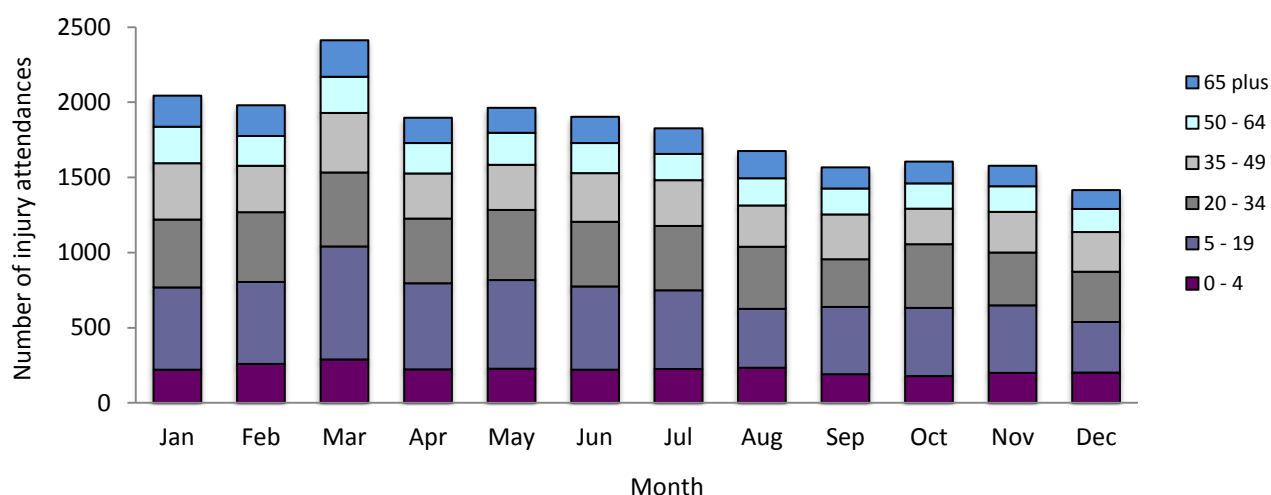


Table 1: Rochdale Infirmary UCC: Total injury attendances by injury group and month, January to December 2011^{12*}

Injury group	Jan	Feb	Mar	Apr	May	Jun	Jul	Aug	Sep	Oct	Nov	Dec	Total	%
Other injury	1240	1269	1580	1202	1335	1257	1254	1023	984	1012	1099	887	14142	65
Fall	475	397	507	370	306	332	273	307	280	279	257	281	4064	19
RTC	139	161	126	129	117	125	111	128	117	124	95	97	1469	7
Assault	98	60	85	70	78	57	51	43	62	56	49	62	771	4
Burns and scalds	63	53	55	62	55	53	67	74	63	60	41	50	696	3
Bites and stings	24	31	47	57	62	71	***	94	***	64	***	29	637	3
DSH	5	9	12	7	10	7	***	7	***	10	***	9	85	0
Total	2044	1980	2412	1897	1963	1902	1827	1676	1566	1605	1577	1415	21864	100

*Percentages may not add to 100 due to rounding.

Figure 2: Rochdale Infirmary UCC: Total injury attendances by age group and month, January to December 2011



¹ Due to low numbers sports injury (n=<5) and electrical accident (n=12) were included in other injury.

² Please note that all numbers less than five have been suppressed in line with patient confidentiality and if there is only one number <5 in a category then two numbers will be suppressed at the next level.

Figure 3: Rochdale Infirmary UCC: Total injury attendances by age group and injury group (excluding other injury), January to December 2011

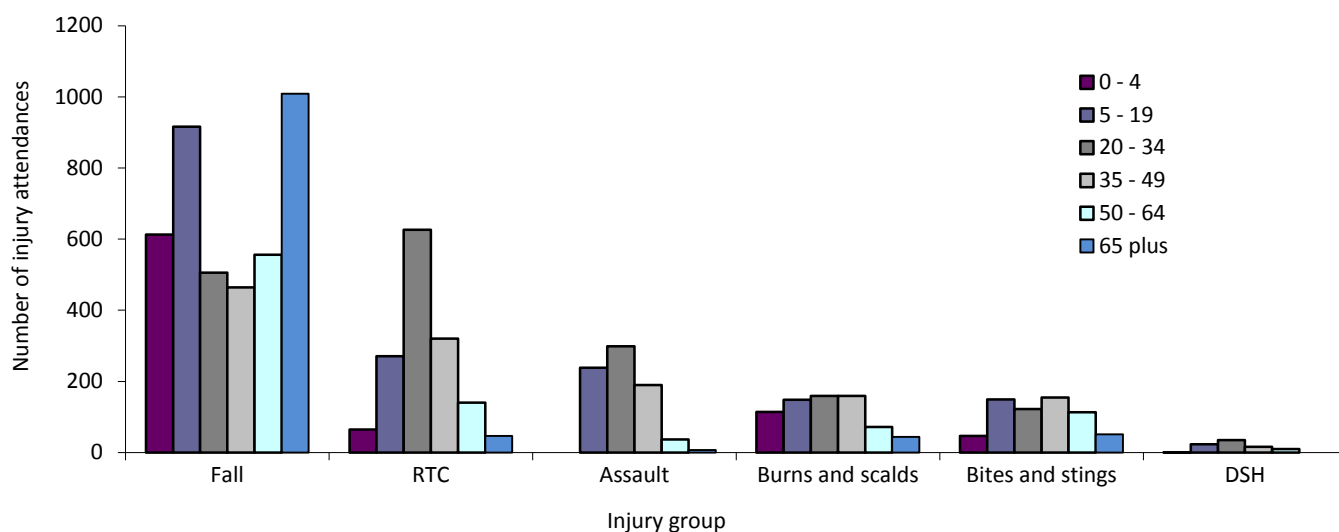


Table 2: Rochdale Infirmary UCC: Total injury attendances by location of incident and injury group (excluding other injury), January to December 2011*

Location	Assault		Bites and stings		Burns and scalds		DSH		Fall		Other injury		RTC		Total	
	n	%	n	%	n	%	n	%	n	%	n	%	n	%	n	%
Educational establishment	29	4	7	1	12	2	***	2	312	8	1043	7	***	0	1406	6
Home	108	14	269	42	354	51	54	64	1637	40	7023	50	16	1	9461	43
Not recorded	80	10	52	8	183	26	10	12	432	11	1023	7	38	3	1818	8
Other	156	20	146	23	72	10	16	19	543	13	2797	20	1403	96	5133	23
Public place	361	47	132	21	20	3	***	4	1017	25	1327	9	***	1	2868	13
Work	37	5	31	5	55	8	***	0	123	3	929	7	***	0	1178	5
Total	771	100	637	100	696	100	85	100	4064	100	14142	100	1469	100	21864	100

*Percentages may not add to 100 due to rounding.

Table 3: Rochdale Infirmary UCC: Total injury attendances by ethnicity and month, January to December 2011^{3*}

Ethnicity	Jan	Feb	Mar	Apr	May	Jun	Jul	Aug	Sep	Oct	Nov	Dec	Total	%
White	1512	1464	1835	1420	1490	1365	1332	1290	1145	1150	1155	1007	16165	74
Pakistani	368	352	382	335	317	361	324	275	298	321	306	299	3938	18
Not stated	53	47	59	40	43	44	61	31	41	29	35	27	510	2
Bangladeshi	37	37	40	45	30	41	37	25	19	28	22	26	387	2
Black	20	29	23	16	26	21	21	20	16	20	15	15	242	1
Mixed	16	17	29	16	23	19	21	16	16	18	19	20	230	1
Any ether ethnic group	18	16	27	11	12	18	8	6	14	10	13	7	160	1
Indian	11	8	8	5	11	18	8	5	9	13	***	5	104	0
Any other Asian background	7	7	8	9	10	7	11	6	***	***	7	8	90	0
Chinese	***	***	***	***	***	***	***	***	***	***	***	***	26	0
Not recorded	***	***	***	***	***	***	***	***	***	***	***	***	12	0
Total	2044	1980	2412	1897	1963	1902	1827	1676	1566	1605	1577	1415	21864	100

*Percentages may not add to 100 due to rounding.

³ White = Irish, British, other white background; Mixed = white and black, white and Asian, mixed any other; Other = any other ethnic group, any other Asian background; Black = African, Caribbean, other black.

Table 4: Rochdale Infirmary UCC: Total injury attendances by method of disposal and month, January to December 2011⁴

Disposal	Jan	Feb	Mar	Apr	May	Jun	Jul	Aug	Sep	Oct	Nov	Dec	Total	%
Discharged	1304	1287	1598	1287	1269	1248	1134	1038	1039	1052	909	846	14011	64
Referral/follow-up	613	559	650	524	595	587	629	567	463	500	616	521	6824	31
Admitted	111	122	139	63	79	56	52	63	58	45	44	38	870	4
Other	16	12	25	23	20	11	12	8	6	8	8	10	159	1
Total	2044	1980	2412	1897	1963	1902	1827	1676	1566	1605	1577	1415	21864	100

Table 5: Rochdale Infirmary UCC: Total injury attendances by method of disposal and injury group, January to December 2011*

Disposal	Assault		Bites and stings		Burns and scalds		DSH		Fall		Other injury		RTC		Total	
	n	%	n	%	n	%	n	%	n	%	n	%	n	%	n	%
Admitted	51	7	***	0	24	3	16	19	380	9	377	3	***	1	870	4
Discharged	497	64	463	73	258	37	27	32	2257	56	9381	66	1128	77	14011	64
Other	51	7	***	0	7	1	10	12	57	1	19	0	***	1	159	1
Referral/follow-up	172	22	169	27	407	58	32	38	1370	34	4365	31	309	21	6824	31
Total	771	100	637	100	696	100	85	100	4064	100	14142	100	1469	100	21864	100

*Percentages may not add to 100 due to rounding.

Table 6: Rochdale Infirmary UCC: Total injury attendances by mode of arrival and month, January to December 2011*

Arrival mode	Jan	Feb	Mar	Apr	May	Jun	Jul	Aug	Sep	Oct	Nov	Dec	Total	%
Private transport	1442	1344	1707	1391	1451	1439	1329	1221	1152	1191	1147	1080	15894	73
Taxi	165	192	180	166	157	141	143	126	120	113	124	118	1745	8
Not recorded	111	94	84	81	124	125	120	114	97	107	78	59	1194	5
Foot	89	87	115	95	103	102	109	115	104	84	95	65	1163	5
Ambulance	144	123	189	77	43	42	53	43	43	36	58	48	899	4
Public transport	36	33	40	36	41	26	40	29	26	34	49	13	403	2
Work transport	17	35	42	16	16	8	13	8	11	18	9	14	207	1
Unknown	15	43	34	18	9	9	9	***	***	15	10	11	186	1
Police	12	16	8	9	12	***	***	***	***	***	***	***	91	0
Other	13	13	13	8	7	***	***	***	***	***	***	***	82	0
Total	2044	1980	2412	1897	1963	1902	1827	1676	1566	1605	1577	1415	21864	100

*Percentages may not add to 100 due to rounding.

⁴ Admitted=admitted to UCC bed/became a lodged patient of the same health care provider; Discharged=discharged - did not require any follow up treatment; Referral/follow-up =discharged - follow up treatment to be provided by GP, referred to UCC clinic, referred to fracture clinic, referred to other out-patient clinic, referred to other health care professional; Other=died in department, left department before being treated, left department having refused treatment, other.

Table 7: Rochdale Infirmary UCC: Assault attendances by gender, incident location, age group and day/time of attendance, January to December 2011*

	Assaults (n=771)		All injuries (n=21,864)
	n	%	%
Gender			
Female	230	30	46
Male	541	70	54
Location			
Public place	361	47	13
Home	108	14	43
Other	156	20	23
Work	37	5	5
Educational establishment	29	5	6
Not recorded	80	9	8
Age group			
0 - 4	***	***	12
5 - 19	238	31	28
20 - 34	299	39	23
35 - 49	190	25	17
50 - 64	37	5	11
65 plus	***	***	9

*Percentages may not add to 100 due to rounding.

Author: Ian Warren, Published: March 2012

For further information please contact: Centre for Public Health, Research Directorate, Liverpool John Moores University,
2nd Floor, Henry Cotton Building, 15-21 Webster Street, Liverpool, L3 2ET.

Tel: 0151 231 4513 or Email: i.j.warren@ljmu.ac.uk

Website: www.tjig.info (data requests should be made through the website)